

Fixed Implant Restorations



Single-tooth gap



Single-tooth replacement



Larger gap (with adjacent teeth)



Implant-borne bridge



Free-end situation (shortened tooth row)

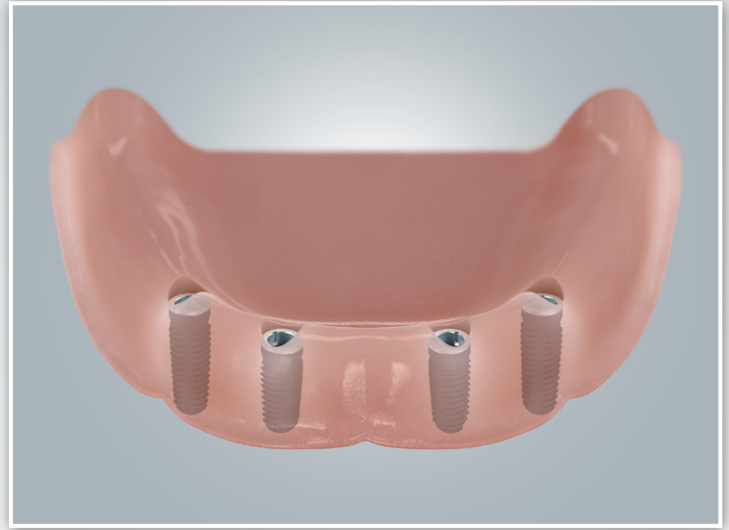


Single crowns on several implants

Removable Implant Restorations



Edentulous mandible



Edentulous mandible with four implants



Fixation with ball anchors



Fixation with press-stud fasteners (Locators)

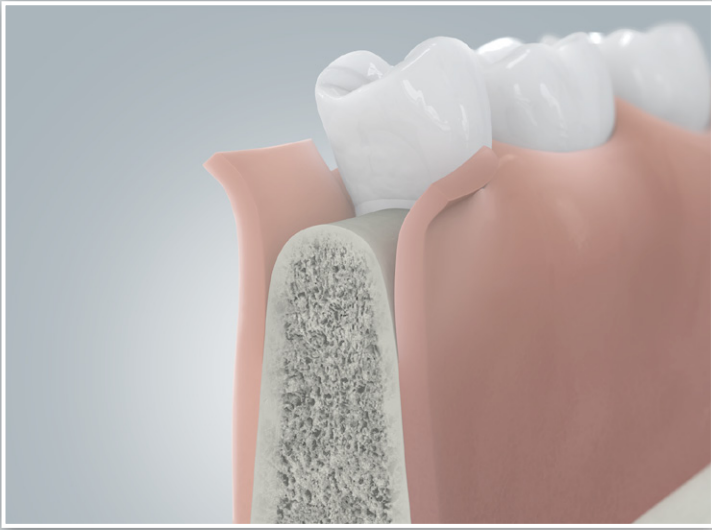


Fixation with double crowns



Fixation with a bar

Course of an Implant Restoration



Exposure



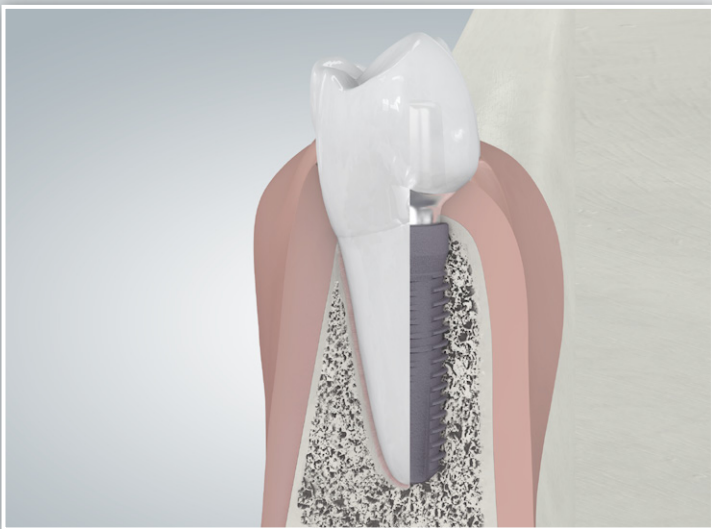
Drilling with a special drill



Osseointegration of the inserted implant



Moulding of the gingiva

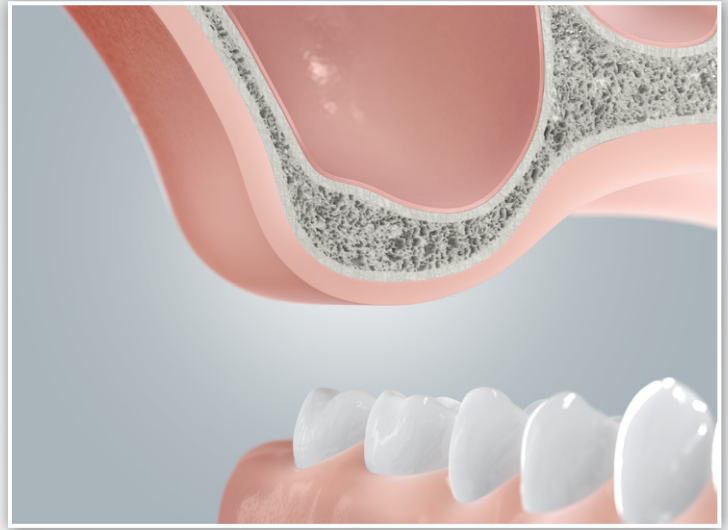


Dental implant, abutment and tooth crown

Bone Augmentation in Mandible and Maxilla



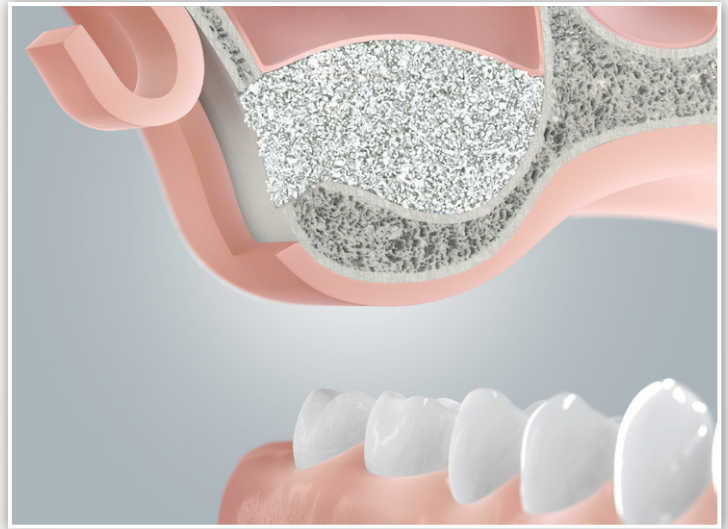
Lack of bone at implantation site



Bone atrophy in maxilla



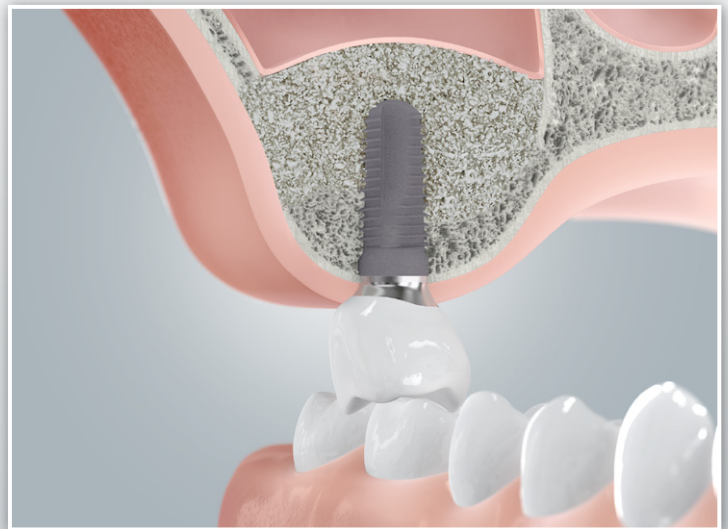
Bone augmentation



Bone augmentation in maxilla (sinus floor elevation)



Implant crown after bone augmentation



Implant crown after sinus floor elevation